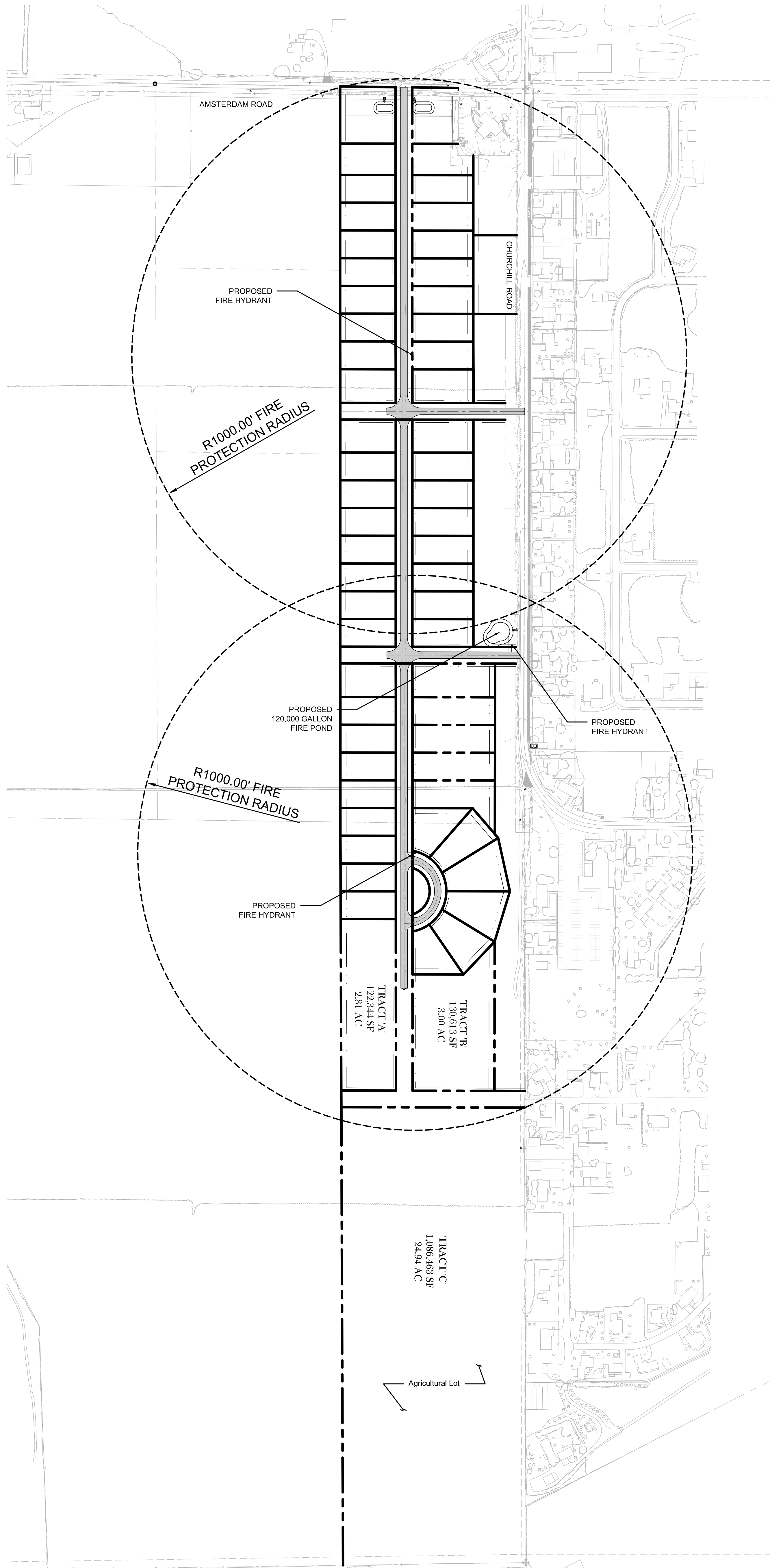


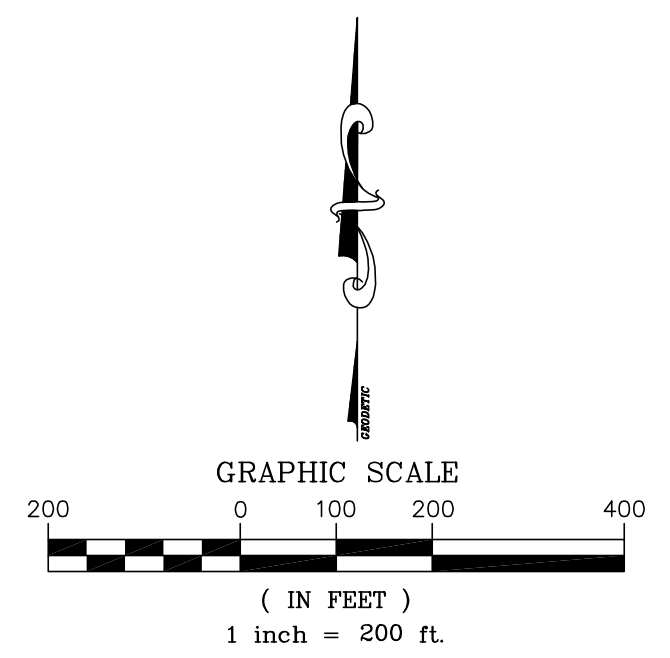
Section III – Part O Fire Protection Plan

PROPOSED FIRE PROTECTION PACKAGE

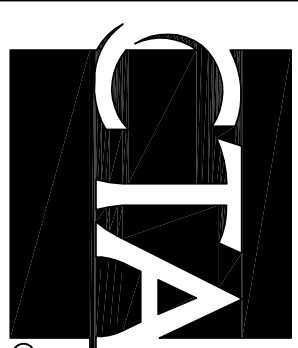
1. FIRE PROTECTION AVAILABILITY
FIRE PROTECTION SERVICES WILL BE PROVIDED BY THE AMSTERDAM RURAL FIRE DEPARTMENT LOCATED: 7179 CHURCHILL RD, MANHATTAN, MT 59741
2. FIRE PROTECTION MAP
ATTACHED
3. EXISTING/PROPOSED COVENANTS
NONE EXISTING OR PROPOSED
4. FIRE PROTECTION COMPLIANCE
COMPLIANCE WITH GALLATIN COUNTY SUBDIVISION REGULATIONS SECTION 6.E. - FIRE PROTECTION REQUIREMENTS:
 - A - THE SUBDIVISION IS LOCATED IN THE AMSTERDAM RURAL FIRE DEPARTMENT SERVICE AREA.
 - B - THE FIRE PROTECTION SYSTEM AND SUBDIVISION SHALL BE DESIGNED TO MEET THE REQUIREMENTS OF APPENDIX I - FIRE PROTECTION PACKAGES. THE FIRE PROTECTION AUTHORITY HAVING JURISDICTION (FPAHJ) SHALL REVIEW AND APPROVE THE FIRE PROTECTION PLAN.
 - C - THE FIRE PROTECTION POND FOR THIS MAJOR RESIDENTIAL SUBDIVISION (50 OR MORE LOTS) WILL HAVE A 120,000 GALLON CAPACITY AND WILL BE EQUIPPED WITH A PUMP CAPABLE OF DELIVERING 1,000 GALLONS PER MINUTE AT 20 PSI MINIMUM THROUGH AN APPROVED PUBLIC WATER SYSTEM, WITH FIRE HYDRANTS FOR 60 MINUTES. THE FIRE HYDRANTS ARE INSTALLED AT NO MORE THAN 1000- FOOT INTERVALS.
 - D-G - NOT APPLICABLE
5. RESIDENTIAL SUBDIVISIONS
THE AMSTERDAM VILLAGE SUBDIVISION COMPLIES WITH THE FIRE PROTECTION PACKAGE OUTLINED IN SECTION 3 OF APPENDIX B OF THE GALLATIN COUNTY SUBDIVISION REGULATIONS FOR MAJOR RESIDENTIAL SUBDIVISIONS (50 OR MORE LOTS/UNITS).
6. COMMERCIAL SUBDIVISIONS
NOT APPLICABLE
7. WILDLAND URBAN INTERFACE AREAS
THE SUBDIVISION IS NOT LOCATED IN A WILDLAND URBAN INTERFACE AREA
8. ALTERNATIVE OPTIONS
NO ALTERNATIVE OPTIONS ARE PROPOSED



NOT FOR CONSTRUCTION - PRELIMINARY DESIGN



SHEET



COPYRIGHT 2014
CTA INC.
ALL RIGHTS RESERVED
DRAWN BY:
CHECKED BY:
DATE: 11/28/2014
CTA # AMS/LLJ/E

FIRE PROTECTION

VILLAG AT AMSTERDAM - 60 LOT
FIRE PROTECTION PACKAGE
GALLATIN COUNTY, MONTANA

REVISIONS